



28 Shorham Rise  
Milton Keynes, MK8 8BS



William Coulson  
Partnered With  
**Simpsons**  
Property Experts



## "Size and Location Combine"

Located in the highly desirable area of Two Mile Ash, this impressive detached family home offers an exceptional combination of space, flexibility, and functionality. With the added benefit of a fully self-contained one-bedroom annex, it provides the perfect setup for multigenerational living, a guest suite, or even rental potential, blending independence and connectivity in one thoughtfully designed property.

The main residence welcomes you with a bright and spacious entrance hall, setting the tone for the rest of the home. The generous living room is ideal for relaxing with family, featuring ample space and natural light. A separate dining room creates the perfect environment for hosting dinner parties and celebrating special occasions. At the heart of the home is a well-equipped kitchen with plentiful storage and workspace, designed to meet the demands of busy family life.

The attached annex is a standout feature, offering a fantastic level of flexibility. With its own private entrance, it includes a double bedroom, kitchen area, and a modern shower room—ideal for elderly relatives, adult children seeking independence, or visiting guests who appreciate their own space. It could also serve as a home office or studio.

Upstairs, you'll find four well-proportioned bedrooms. The master bedroom benefits from its own ensuite shower room, while the remaining bedrooms are served by a modern family bathroom. Every room is thoughtfully laid out to maximise comfort, privacy, and practicality.

Externally, the home continues to impress. The block-paved driveway provides parking for multiple vehicles, and the beautifully maintained rear garden offers a private sanctuary with a spacious patio area perfect for outdoor dining, summer gatherings, or simply relaxing. The large lawn provides plenty of room for children to play and adults to unwind.

Offers over £550,000



5



3



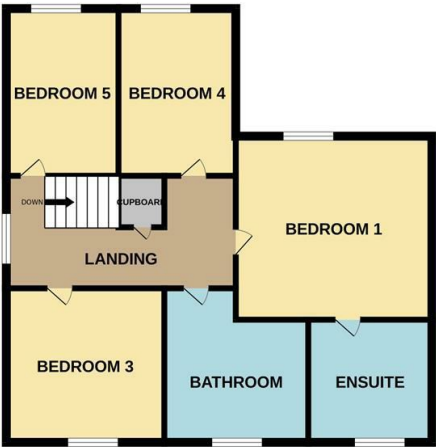
3



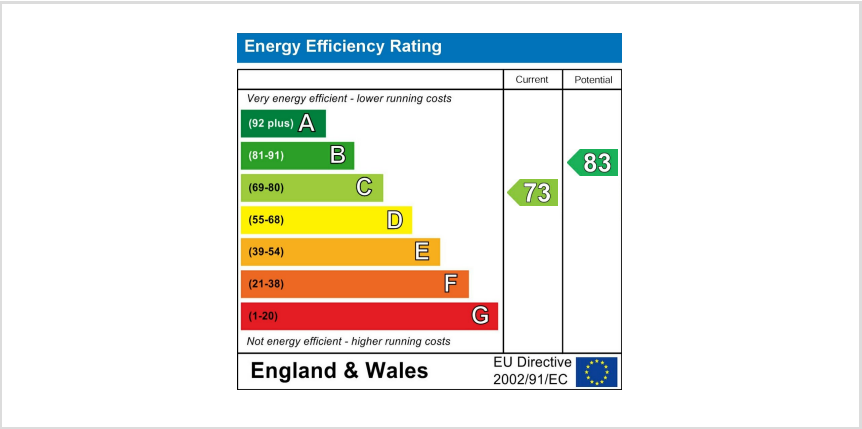
GROUND FLOOR



1ST FLOOR



Whilst every attempt has been made to ensure the accuracy of the floor plan contained here, measurements of doors, windows, rooms and any other items are approximate and no responsibility is taken for any error, omission, or mis-statement. The plan is copyright to Simpson and Partners and is for illustrative purposes and should only be used as such by any prospective purchaser. The services, systems and appliances shown have not been tested and no guarantee as to their operability can be given  
Made with Metropix ©2025







William Coulson  
Partnered With  
**Simpsons**  
Property Experts

Tel: 01908 040289

Email: [william.coulson@simpsonspropertyexperts.co.uk](mailto:william.coulson@simpsonspropertyexperts.co.uk)

Web: <https://simpsonspropertyexperts.co.uk/our-locations/milton-keynes>

